

General Ledger

The General Ledger program seamlessly integrates with all of the other accounting modules, including Accounts Receivable, Point of Sale, Inventory, Income and Accounts Payable, all of which automatically post to the general ledger. This program offers the ability to set up the chart of accounts by department and site.

Included is the ability to create set form journal entries for all departments, drill down from any G/L transaction, automatically allocate revenue to several transaction revenue when appropriate, and a host of other G/L level activities.

In addition, the General Ledger program can generate balance sheets, trial balances, budget comparison reports, profit and loss statements, and all other major financial reports.

Reports are available by individual site, department, cost/profit center, or consolidated for all department appropriates. The R&R Report Writer is the system report generator, it means all reports can custom (depend on database structure) to your need.

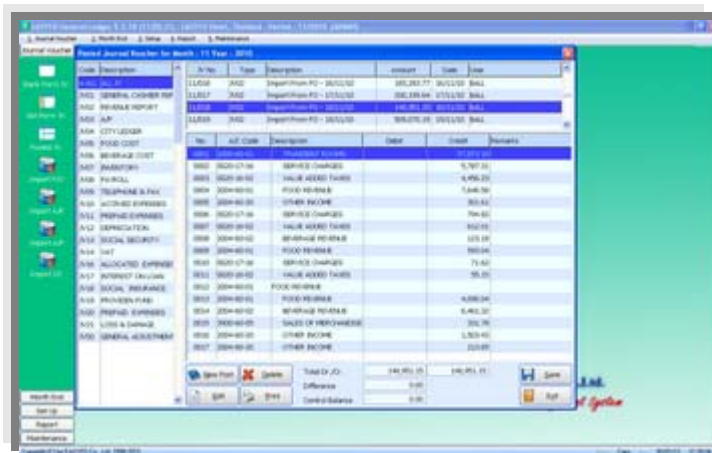


Main menu

- Blank Form Journal Voucher for manual or adjustment purpose.
- Predefine Set Form Journal Voucher for set of account code that usually posted purpose.
- View Journal Voucher use for viewing by JV no., JV type,
- Import Data from Account Payable and Income will automatic allocation feature.
- Month End is the easy one step procedure to close month.
- Recovery Month End use for recovery month end procedure and all data will be previous month before close month end.
- All set up is user define configuration, after installation the user are still able to create, modify and delete setup.

(Journal Voucher)

- Definable Journal Voucher type
- User definable Set Form Journal Voucher
- Manual blank form style entry
- Definable Set of account code for Set Form Journal Voucher
- System check by Different and Control Balance figures
- View and edit all posted Journal Voucher transaction
- View Journal Voucher history



Month End

- Recovery data from previous month for editing
- View Summary Trial Balance report
- View details transaction by specific a/c code report
- Journal Voucher details report with accumulate
- Flexible Financial Statement and Printable in Thai and English
- Comparative statement of Income and Expenses Report
- Income & Expenses by department report
- All past month report will be printable All report can export to Text / Worksheet / Database and Acrobat files

Account Code Set Up

- User definable Charge Of Account code
- Charge of account code can define up to 20 characters
- Five layers for charge of account with flexible characters lengths
- Import Income revenue with automatic allocate account code
- Easy view (Tree style) charge of account setup
- Configure of account code budgets
- Support Thai and English language on screen and printing

